

1 **Population estimates of the Allegheny woodrat (*Neotoma magister*) in Maryland based on**
2 **long-term capture-recapture data**

3 Kelly J Pearce ¹, Dan J Feller², Thomas L Serfass^{1,3}, Sunshine L Brosi³

4 ¹University of Maryland Center for Environmental Sciences, Appalachian Laboratory

5 ²Maryland Department of Natural Resources, Natural Heritage Program

6 ³Frostburg State University, Department of Biology and Natural Resources

7

8 **Abstract**

9 Allegheny woodrats (*Neotoma magister*) are experiencing population declines in the northeastern
10 portion of their range, and are ranked as S1 and listed as Endangered in Maryland. As a response
11 to reported declines in these states, woodrats have been the focus of ongoing population
12 monitoring in Maryland since 1990. Annual live trapping has occurred at 3 sites, including
13 Savage River State Forest's High Rock Area in Garrett County, Dan's Mountain Wildlife
14 Management Area and Fort Hill Nature Conservancy Preserve in Allegany County. Biennial live
15 trapping has occurred at 2 additional sites, including Indian Springs Wildlife Management Area
16 in Washington County and Frederick City Watershed in Frederick County. Between 10-35 (\bar{x} =
17 24) Tomahawk live traps baited with oats and peanut butter were placed (10-20m apart) near
18 known, or likely, woodrat middens or latrines, including near overhangs, and talus areas for 2
19 trap-nights. To date, 5033 trap-nights (\bar{x} = 838.8 \pm 612.5 trap-nights) has yielded 908 woodrats
20 (new and recaptured), including 410 individuals captured and uniquely tattooed. Population
21 estimates were calculated using the Lincoln-Petersen Index for all 6 sites and the spatially
22 explicitly recapture program (SECR) program in R for 3 sites with adequate number of re-
23 captures. The results suggest that woodrat populations exist at low densities, are continuing to
24 decline in western Maryland, and that certain sites represent critical habitat.

25 **Key words** Allegheny woodrats, density estimation, Lincoln-Petersen, *Neotoma magister*,
26 population estimate

27 **Introduction**

28 The ability of management agencies and ecologists to accurately estimate population density is a
29 critical parameter for many conservation plans. Conventionally, estimating the number of

30 animals in a population is conducted by capture – recapture in a closed population without
31 modelling the spatial relationship between animals and detectors. Because individual animals
32 differ in their exposure to traps, using non-spatial estimators can be problematic. Conventional
33 approaches, such as the Lincoln-Petersen Index estimate abundance as opposed to density, which
34 can lead to over or under estimation of animals with only part of their home range within the
35 sampling area (Parmenter et al. 2003). To overcome the “edge-effect” (i.e., higher probability of
36 captures in traps around the edge [Gurnell and Flowerdew 1990]) and these other concerns,
37 Efford (2004) developed a spatially explicit capture–recapture (SECR) method to estimate
38 population density. Spatially explicit methods do not assume geographic closure, which has been
39 demonstrated to increase the precision of population estimates (Efford & Fewster 2013).

40 The SECR approach assumes that every individual occupies an unknown home-range center, and
41 the probability of detecting an individual is a decreasing function of the distance between its
42 home-range center and a live trap (Efford 2004). This probability follows a 2-parameter spatial
43 detection function that correspond to a measure of home-range size (sigma [σ]), and the
44 probability of capture at the center of the home range (g_0). The most simple detection function
45 estimates these 2 parameters based on the distance between recaptures of uniquely marked
46 individuals and the frequency of the capture. Additional detection parameters can also be
47 modeled, including learned response (b), which can account for “trap-happy” or “trap-shy”
48 animals. Population density (D) is estimated concurrently with the spatial scale of detection (σ)
49 using maximum-likelihood methods (Borchers and Efford 2008).

50 Allegheny woodrats (*Neotoma magister*) were once distributed from southern Connecticut,
51 westward to Indiana and southward to northern Alabama, but are now extirpated or in decline
52 throughout this range (Wright 2008). In Maryland, Allegheny woodrats currently only remain in
53 scattered segments of the four westernmost counties (Garrett, Allegany, Washington, and
54 Frederick) and are state ranked S1 (highly state rare) and state listed as Endangered (Maryland
55 State Wildlife Action Plan 2015). Allegheny woodrats are habitat specialists, inhabiting discrete
56 rock outcroppings and talus slopes surrounded by mast-bearing, mature to old growth forests
57 (Ford et al. 2006). In Maryland, this habitat has a patchy distribution across the landscape and so
58 Allegheny woodrats exist in small semi-isolated subpopulations within larger metapopulations
59 (Wood 2008).

60 As a response to reported population declines in the northeast, Allegheny woodrats have been the
61 focus of ongoing population monitoring in Maryland since 1990. Annual live trapping has
62 occurred at 4 sites, in Garrett and Allegany County and biennial live trapping has occurred at 2
63 sites in Washington County and Frederick County. The goal of this study is to estimate
64 population density of the Allegheny woodrat using capture-recapture data obtained by live-
65 trapping of 6 long-term sites in western Maryland. We estimate population density using both
66 non-spatial (classical) methods (i.e., Lincoln-Petersen Index) and SECR methods in an attempt to
67 accurately estimate the population of Allegheny woodrats in western Maryland.

68 **Methods**

69 **Field Data Collection**

70 Maryland Department of Natural Resources (DNR) Natural Heritage Program personnel
71 conducted annual live trapping between 1990 – 2017 at 4 sites in western Maryland (Savage
72 River State Forest’s High Rock Area in Garrett County [1990 – 2017, except 1995], Dans
73 Mountain Wildlife Management Area [1991-2017] and Fort Hill North [Fort Hill N] [1991–
74 1992, 1996 – 2017], and Fort Hill The Nature Conservancy Preserve [Fort Hill TNC] [1992,
75 1994 – 2017] in Allegany County, Figure 1). Live trapping occurred at 2 additional sites (Indian
76 Springs Wildlife Management Area [1991 – 1992, 1993 – 2017 biennially] in Washington
77 County and Frederick City Watershed [1991 – 1992, 1995, 1996-2016 biennially] in Frederick
78 County, Figure 1). Trapping was conducted for two consecutive nights between July and
79 September to correspond with the weaning of the young of the year and before night time
80 temperatures became too cold. At each site 5-35 ($\bar{X} = 24$) Tomahawk live traps (Model 202
81 [15.24 cm x 15.24 cm x 48.26 cm] Tomahawk Live Trap, Tomahawk, Wisconsin, USA) were
82 baited with peanut butter and oats and set 10-20 m apart at the same marked location each survey
83 year. Live traps were placed near known, or likely, woodrat middens or latrines, including in
84 overhangs, and talus areas. The number of traps at each site, and the locations of each trap at
85 each site remained consistent throughout the 27-year period, although there were some instances
86 when a trap was left closed to prevent the recapture of young, or a lactating female. DNR
87 personnel checked traps before 1100h the following morning and recorded sex
88 (male/female/unknown), reproductive condition, reproductive status (yes/no), weight, (grams),

89 age (juvenile, subadult, adult), recapture status, and if unmarked, each woodrat was given a
90 unique ear tattoo.

91 **Data Analysis**

92 We summarized total trap-days (TD) (defined as a 24 hour period in which the live trap was
93 operational), total captures, and total captures by sex across all sites. If a trap was closed to
94 prevent recapture of a young, or lactating female, it was not included in the total TD. Lincoln-
95 Petersen index was used to estimate woodrat population size at all 6 sites from 1990-2017. We
96 used the naïve density estimator to convert population size to density. Thus, we took the average
97 over the 27-year period and divided it by effective trapping area (hectares). We considered that
98 the area covered by traps represented the effective trapping area, a method used in estimating
99 other rodent species (e.g., Juškaitis 2014). Effective trapping area was estimated using the
100 polygon measurement feature in Google Earth Pro (v 7.3.0) for each site.

101 We further analyzed the capture histories to estimate population density using the SECR
102 program in R (R Development Core Team 2007) at 3 sites (Abe Mills, Dans Rock, High Rock).
103 Because of the small recapture sample size at Fort Hill N, Fort Hill TNC and Fishing Creek, we
104 excluded those sites from the SECR analysis. SECR models capture-recapture data collected
105 with an array of ‘detectors’ (e.g., live-traps) and models were fitted with a half-normal detection
106 function by numerically maximizing the full likelihood (Borchers & Efford 2008). We varied the
107 spatial buffer by site, and assumed that all home-range centers had a Poisson distribution (Efford
108 2004).

109 Each trapping session was treated as an independent sample for estimation. We applied two
110 multiple models to each of the 3 sites: the null model with all model parameters (D , λ_0 , and σ)
111 constant (i.e., capture and recapture probabilities equal), and a behavioral model with different
112 capture and recapture probabilities (i.e., trap happy or trap shy). We selected the best model
113 based on Akaike Informational Criteria weights corrected for small sample size (AIC_c)
114 (Burnham & Anderson 2002). We ranked all models by AIC_c values and considered the best
115 models as those with the smallest AIC_c values and largest Akaike weights (w_i) (Burnham &
116 Anderson 2002). Based on the AIC criterion, models with ΔAIC_c values <2 were also
117 considered useful (Burnham & Anderson 2002).

118 **Results**

119 At the six long-term monitoring sites, 4833 TD ($\bar{x} = 805.5 \pm 643.26$ TD) yielded 908 woodrats
120 (new and recaptured), including 410 individuals captured and uniquely tattooed over the 27-year
121 period (Figure 2). Additionally, 129 (31%) individuals were recaptured during another trapping
122 session (i.e., year). Between 2007-2017 live trapping yielded 201 woodrats captured, including
123 99 individuals captured and uniquely tattooed (Figure 2)

124 The capture rate varied by sites, with the highest capture rate at Fort Hill N (28.75 captures/100
125 TD, Table 2) and lowest at Fort Hill TNC (10.90 captures/100 TD, Table 2). Of the 410 unique
126 individuals, 189 (46%) were females, 212 (52%) were males and 9 (2%) were unknown. The
127 mean weight was 272.7 (± 98.7 SD) grams.

128 We estimated the population for each site every year live trapping occurred using the Lincoln-
129 Petersen Index (Figure 3). Lincoln-Petersen density estimates ranged from 0-35.7 ($\bar{x} = 4.5 \pm 3.15$
130 SD) woodrats per site, with the highest estimate at High Rock ($\bar{x} = 9.37 \pm 9.41$ SD) and lowest at
131 Fort Hill TNC ($\bar{x} = 0.46 \pm 0.72$ SD) (Table 3). Current (2017) population estimates range from
132 0-6 ($\bar{x} = 1.8 \pm 2.56$) woodrats/site.

133 Effords spatial models assume no competition for traps, and there was no trapping session during
134 the study period where trap saturation was reached. Density varied among sites, with the highest
135 density occurring at High Rock (3.28/ha) (Table 4). For Abe Mills, the null model was more
136 supported ($\Delta AIC_c < 2$, AIC_c weight 0.53) compared to the behavioral model ($\Delta AIC_c = 0.27$, AIC_c
137 weight = 0.46, Table 5) which was also supported. For Dans rock, the null model was supported
138 $\Delta AIC_c < 2$, AIC_c weight 0.73, Table 6). Finally, for High Rock the null model was supported
139 ($\Delta AIC_c < 2$, AIC_c weight 0.83, Table 7).

140

141 **Discussion**

142 Accurately estimating population abundance and density is a critical aspect of any conservation
143 management plan. Allegheny woodrats, are habitat specialists that exists in small, isolated
144 populations and have been in decline throughout their northeastern range since 1970s (LoGiudice
145 2008). In Maryland, Allegheny woodrats have been the focus of long-term population

146 monitoring since 1990, through the use of annual, and biennial live-trapping. There is a general
147 decreasing population trend at all 6 long-term monitoring sites since 1990. However, Dans Rock
148 reached a peak in 2013, and both Fort Hill N and High Rock have experienced an increase in the
149 Lincoln-Petersen estimate since 2012 and 2010, respectively (Figure 4).

150 Spatially explicit methods for estimating population size offers an advantage over more
151 conventional estimates such as the Lincoln-Petersen index which does not consider the
152 geographic extent of the target population, nor account for behavioral impacts that live-trapping
153 can induce (Royle et al. 2014). By combining user-specified geographic region of interest with a
154 fitted model of density, spatially explicit methods are generally less biased than estimates from
155 non-spatial methods (Efford & Fewster 2013). However, SECR also requires a minimum number
156 of recaptures, which prevented us from applying this method to all 6 long-term sites.

157 Using the naïve density estimate, our results at Abe Mills (1.68 ± 1.64 SE), Dans Rock ($35.38 \pm$
158 0.61 SE) and High Rock (25.34 ± 1.81 SE) were much higher than the SECR density estimates
159 (Figure 3). The naïve density estimate is likely to be overestimated (Burt and Grossenheider
160 1976).

161 The traditional non-spatial methods based on translating population size into density does not
162 appear to be a robust estimate because it eliminates the spatial component of capture data (royle
163 et al. 2014). The SECR maximum likelihood density estimate obtained at Abe Mills (0.22
164 individuals/ha), Dans Rock (3.84 individuals/ha), and High Rock (3.28 individuals/ha) is lower
165 than our non-spatial density results and suggests that Allegheny woodrats exist in low densities
166 in western Maryland, and is similar to other reported densities (Burt and Grossenheider 1976).
167 However, Allegheny woodrat densities are not frequently reported in hectares, so the ability to
168 compare our results were limited. The ideal number of recaptures is 20, so with additional trap
169 nights or sessions at Fishing Creek, Fort Hill N, and Fort Hill TNC those sites may also be able
170 to be included in the analysis.

171 Our results suggest that Allegheny woodrat populations are continuing to decline, especially
172 considering that the only 22% of all captures have occurred in the past 10 years (Figure 2). The
173 population at many of these sites has been reduced to 1 or 0 individuals at least one time since
174 trapping efforts have started. These sites likely experienced immigration from nearby sites
175 (Mengak et al. 2008). Additionally, current (2017) population estimates 0-6 ($\bar{x} = 1.8 \pm 2.56$)

176 woodrats/site indicate the small number of woodrats at each site. These long-term monitoring
177 sites are considered some of the best strongholds for Allegheny woodrat populations in western
178 Maryland, but low population densities, continued declines, and possibility of genetic
179 consequences put into question the species long-term viability in the state.

180 **Acknowledgments**

181 “Identifying and Targeting Intervention Strategies for Allegheny Woodrat (*Neotoma magister*)
182 Recovery” was supported by State Wildlife Grant funding awarded through the Northeast
183 Regional Conservation Needs (RCN) Program. The RCN Program joins thirteen northeast states,
184 the District of Columbia, and the U.S. Fish and Wildlife Service in a partnership to address
185 landscape-scale, regional wildlife conservation issues. Progress on these regional issues is
186 achieved through combining resources, leveraging funds, and prioritizing conservation actions
187 identified in the State Wildlife Action Plans. See RCNGrants.org for more information.

188 **Literature Cited**

- 189 Balcom, BJ, Yahner RH. 1996. Microhabitat and landscape characteristics associated with the
190 threatened Allegheny woodrat. *Conservation Biology* **10**:515-523.
- 191 Borchers DL, Efford MG. 2008. Spatially explicit maximum likelihood methods for capture –
192 recapture studies. *Biometrics* **64**:377–385.
- 193 Burnham KP, Anderson DR. 2002. Model selection and multimodel inference: A practical
194 information-theoretic approach (2nd ed). Springer-Verlag, New York.
- 195 Burt WH, Grossenheider RP. 1976. A field guide to the mammals, field marks of all North
196 American species found north of Mexico (3rd edition). Houghton Mifflin Company. Boston,
197 Massachusetts.
- 198 Development Core Team R. 2007. R: A language and environment for statistical computing. R
199 Foundation for Statistical Computing, Vienna.
- 200 Efford MG, and Fewster RM. 2013. Estimating population size by spatially explicit capture-
201 recapture. *Oikos* **122**:918–928.

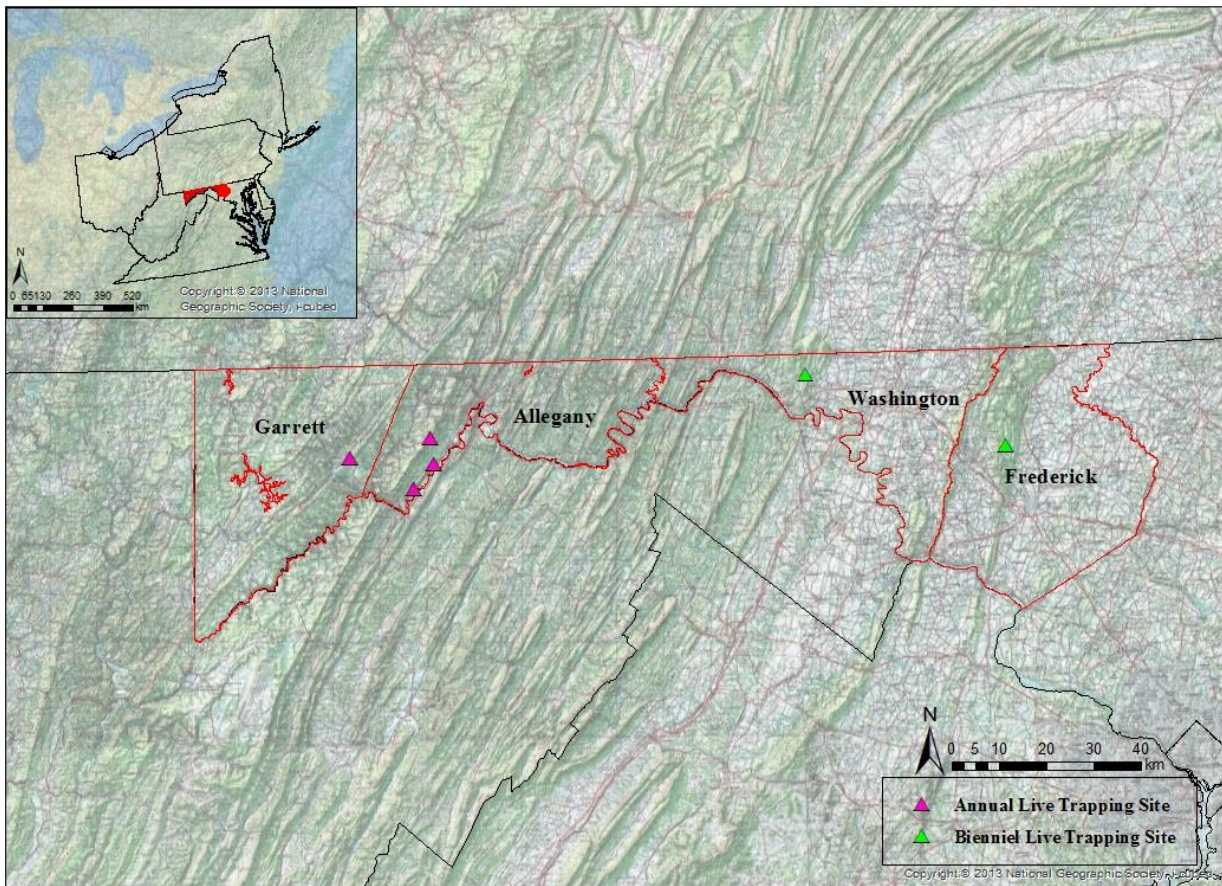
- 202 Foster DR, Motzkin G, Bernardos D, and Cardoza J. 2002. Wildlife dynamics in the changing
203 New England landscape. *Journal of Biogeography* **29**:1337–1357.
- 204 Gurnell, J, Flowerdew, JR. 1990. Live trapping small mammals: A practical guide. Occasional
205 Publications of the Mammal Society No. 3. The Mammal Society.
- 206 Johnson A, Vongkhamheng C, Saithongdam T. 2009. The diversity, status and conservation of
207 small carnivores in a montane tropical forest in northern Laos. *Oryx* **43**:626–633.
- 208 Juškaitis, R. 2014. The common doormouse *Muscardinus avellanarius*: Ecology, population
209 structure and dynamics (2nd edition). Nature Research Centre Publishers, Vilnius.
- 210 Karanth, K, Chundawat RS, Nichols JD, Kumar NS. 2004. Estimation of tiger densities in the
211 tropical dry forests of Panna, Central India, using photographic capture–recapture
212 sampling. *Animal Conservation* **7**:285–290.
- 213 Kays, R.W, Slauson KM, 2008. Remote cameras. Pages 110–140 *in* R. A. Long, P.
214 MacKay, W. J. Zielinski and J. C. Ray, editors. Noninvasive survey methods for
215 carnivores. Island Press, Washington DC, USA
- 216 LoGiudice K. 2003. Trophically Transmitted Parasites and the Conservation of Small
217 Populations: Raccoon Roundworm and the Imperiled Allegheny Woodrat. *Conservation*
218 *Biology* **17**:258–266. Available from <http://dx.doi.org/10.1046/j.1523-1739.2003.01293.x>.
- 219 LoGiudice K. 2006. Toward a Synthetic View of Extinction: A history lesson from a North
220 American rodent. *BioScience* **56**:687.
- 221 Long RA, Donovan TM, Mackay P, Zielinski WJ, and Buzas JS. 2011. Predicting carnivore
222 occurrence with noninvasive surveys and occupancy modeling. *Landscape Ecology*
223 **26**:327–340.
- 224 Owen SF, Edwards JW, Ford WM, Crum JM, Wood PB. 2004. Raccoon roundworm in raccoons
225 in central West Virginia. *Northeastern Naturalist* **11**:137–142. Available from
226 <http://www.jstor.org/stable/3858380>.
- 227 Parmenter RR et al. 2003. Small-mammal density estimation: A field comparison of grid-based
228 vs. web-based density estimators. *Ecological Monographs* **73**:1–26.
- 229 Royle, J., Solimann R, Gardner B. 2014. Spatial capture-recapture. Academic Press.

230 Wood, PB. 2008. Woodrat population dynamics and movement patterns. Pages 45-62 in J.D. and
231 J. Wrights, editors. The Allegheny woodrat: Ecology, conservation and management of a
232 declining species. Springer-Verlag, New York.

233 Zielinski, WJ., Truex R.L, Schlexer FV, Campbell LA, Carroll C. 2005. Historical and
234 contemporary distributions of carnivores in forests of the Sierra Nevada, California, USA.
235 *Journal of Biogeography* **32**:1385-3407.

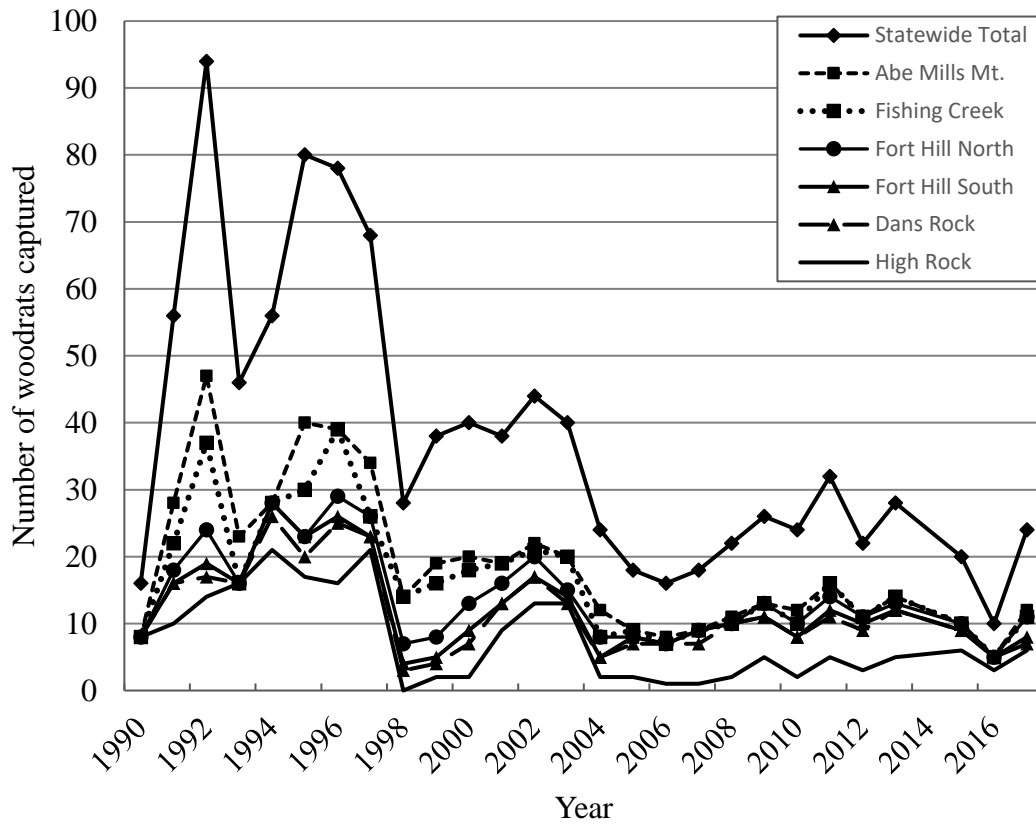
236

237



239

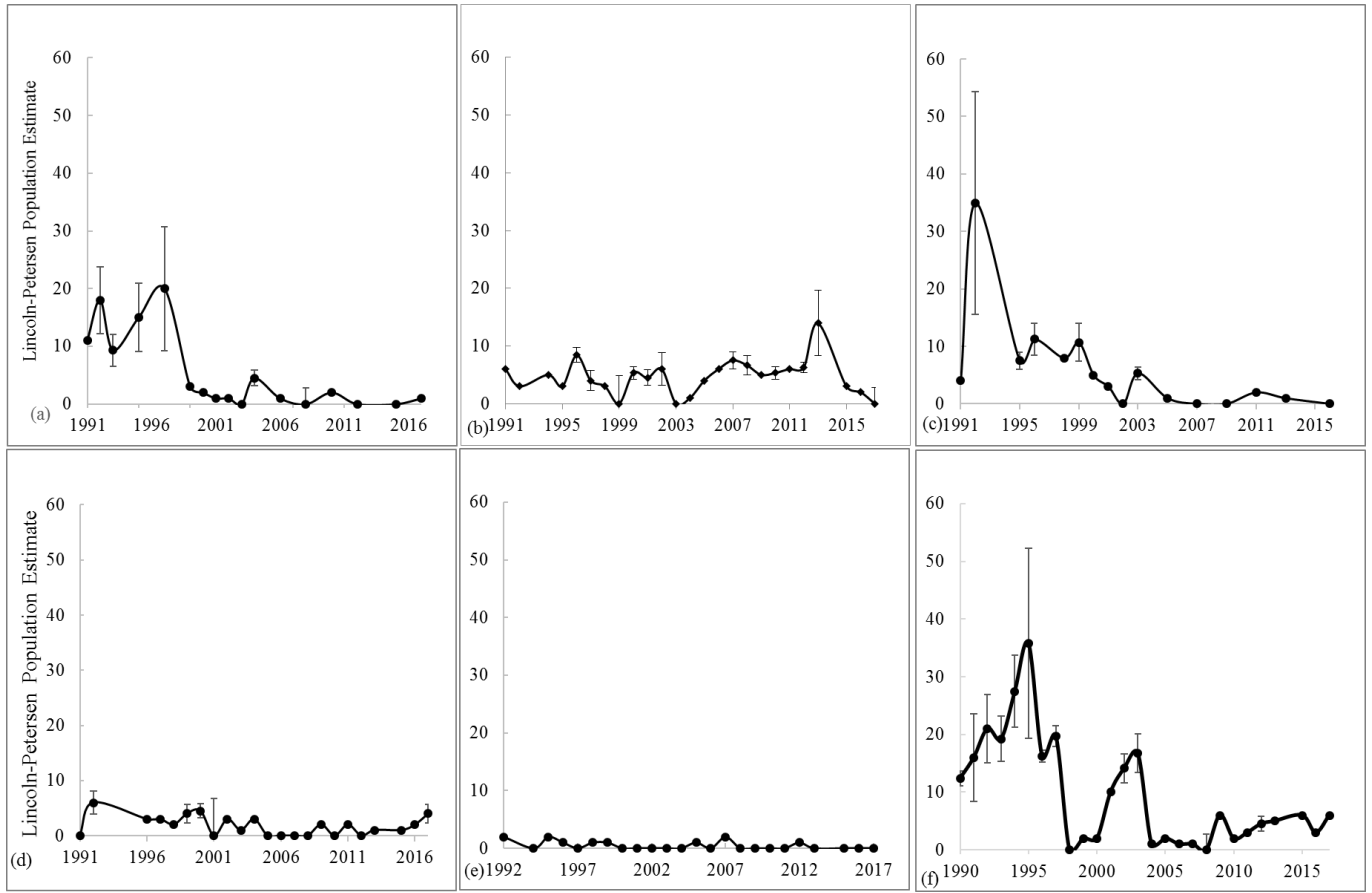
240 Figure 1. Six live trapping sites are distributed across western Maryland. Four sites (Dan's Rock,
241 Fort Hill North, Fort Hill The Nature Conservancy, and High Rock are trapped annually; Abe
242 Mills and Fishing Creek are trapped biennially.



243

244 Figure 2. Combined live-trapping results (1990-2017) at Allegheny woodrat (*Neotoma magister*)

245 long-term monitoring sites in Garrett, Allegany, Washington and Frederick County, Maryland.



246

247 Figure 3. Lincoln-Petersen population estimates of Allegheny woodrat (*Neotoma magister*)
 248 between 1990-2017 at six long-term monitoring sites in Garrett, Allegany, Washington and
 249 Frederick County, Maryland. (a) Abe Mills (b) Dan's Rock (c) Fishing Creek (d) Fort Hill North
 250 (e) Fort Hill The Nature Conservancy (f) High Rock. Error bars represent the 95% confidence
 251 interval.

252 Table 1. Capture rate of the Allegheny woodrat (*Neotoma magister*) at 6 long-term monitoring
 253 sites in western Maryland surveyed from 1990-2017.

	Abe Mills	Dans Rock	Fishing Creek	High Rock	Fort Hill TNC	Fort Hill N
No. Trap Nights	746	770	800	2011	266	240
Total Woodrats Captured	104	202	114	390	29	69
Capture Rate ([trap events/ trap nights] x 100))	13.94	26.23	14.25	19.39	10.90	28.75

254

255 Table 2. Descriptive data for the Allegheny woodrat (*Neotoma magister*) Lincoln-Petersen Index
 256 population estimates based on long-term data at 6 sites in western Maryland surveyed from 1990-
 257 2017.

	Abe Mills	Dans Rock	Fishing Creek	Fort Hill N	Fort Hill TNC	High Rock
Range	0-18	0-8.4	0-10.66	0-6	0-2	0-35.75
Average ± SD	5.23 ± 6.77	4.60 ± 3.04	5.86 ± 8.46	1.80 ± 1.76	0.46 ± 0.72	9.37 ± 9.41
Size (ha)	3.1	0.13	1.23	0.45	0.10	0.37
Density (indiv/ha) ± SE	1.685 ± 1.64	35.38 ± 0.61	4.76 ± 2.16	4.00 ± 0.37	4.58 ± 1.47	25.38 ± 4.71

258

259 Table 3. Descriptive data for the Allegheny woodrats (*Neotoma magister*) included in the
 260 analysis for density estimates. High Rock and Dans Rock were trapped annually from 1990-2017
 261 except for 2014. Abe Mills was trapped biennially from 1990-2017. Each trapping session lasted
 262 2 consecutive days. All estimates $\pm SE$ from point estimates

Site	No. trapping sessions	No. woodrats captured	Mean density/ha	Range of densities/ha	Mean $g(0)^a$	Mean σ^b
Abe Mills	16	68	0.22	0.15 – 0.33	0.24 ± 0.05	79.16 ± 12.3
Dans Rock	23	112	3.84	2.63 – 5.63	0.5 ± 0.10	18.63 ± 2.16
High Rock	30	253	3.28	2.76 – 3.89	0.16 ± 0.02	27.8 ± 2.10

^a Detection probability of an animal at its home-range center (Efford 2004)

^b Measure of the spatial scale over which probability declines and is related to home range size and trap spacing

263 Table 4. Comparison of SECR models for variation in the density of Allegheny woodrats (*Neotoma*
 264 *magister*) at Abe Mills Mountain, Indian Springs Wildlife Management Area, Maryland. The
 265 buffer width was set at 50m because it was rare to get an individual movement above these
 266 distances at this site.

Model	Formula	K ^a	LL ^b	ΔAIC_c^c	AIC _c weight ^d
Null	D~1 g0~1 sigma~1	3	-1256.4	0	0.53
Behavior	D~1 g0~b sigma~1	3	-1255.5	0.269	0.46

^a Number of fitted parameters

^b Maximized log likelihood

^c Difference in the small-sample adjusted AIC between the current model and the best model

^d Probability that a model best approximates the data in comparison to other models being considered

268 Table 5. Comparison of SECR models for variation in the density of Allegheny woodrats (*Neotoma*
 269 *magister*) at Dans Rock, Maryland. The buffer width was set at 100m because it was rare to get an
 270 individual movement above these distances at this site.

Model	Formula	K ^a	LL ^b	ΔAIC_c^c	AIC _c weight ^d
Null	D~1 g0~1 sigma~1	3	-502.97	0	0.73
Behavior	D~1 g0~b sigma~1	3	-502.91	2.2	0.26

^a Number of fitted parameters

^b Maximized log likelihood

^c Difference in the small-sample adjusted AIC between the current model and the best model

^d Probability that a model best approximates the data in comparison to other models being considered

271 Table 6. Comparison of SECR models for variation in the density of Allegheny woodrats (*Neotoma*
 272 *magister*) at High Rock, Savage River State Forest, Maryland. The buffer width was set at 50m
 273 because it was rare to get an individual movement above these distances at this site.

Model	Formula	K ^a	LL ^b	ΔAIC_c^c	AIC _c weight ^d
Null	D~1 g0~1 sigma~1	3	-1382.8	0	0.83
Behavior	D~1 g0~b sigma~1	3	-1385.1	4.17	0.09

^a Number of fitted parameters

^b Maximized log likelihood

^c Difference in the small-sample adjusted AIC between the current model and the best model

^d Probability that a model best approximates the data in comparison to other models being considered

274